

844-5-B 2-jaw puller with force-amplifying, self-centering puller legs, hydraulic spindle, up to 250 mm clamping range, 250 mm clamping depth



DESCRIPTION

The handy, 2-jaw Puller with force-amplifying, self-centering puller legs and grease hydraulic Spindle is used for pulling particularly tight-fitting bearings, gears, and discs in all common sizes for the trade, workshop, and industry. By tightening the Spindle, the puller legs automatically center themselves. The grease hydraulic Spindle of the series 800 is the engine of the Puller and achieves a pulling force of 10 t. As a true powerhouse, the Spindle impresses with its compact design, easy applicability, and transportable use. The Spindle is ribbed on the sides to provide particularly good grip for the fingers when repositioning.

RANGE OF APPLICATION

For pulling off particularly tight bearings, gearwheels and pulleys

BENEFIT

- Self-centering of the puller legs by manual tightening of the spindle (Autogrip Technology)
- Spindle extensions enable quick adjustment to various requirements
- The hydraulic spindle guarantees an easy and controlled pulling of particularly tight-fitting parts with minimal effort.
- Slim design of the puller leg enables reaching hard-to-access areas
- No additional tools are required for the pulling process

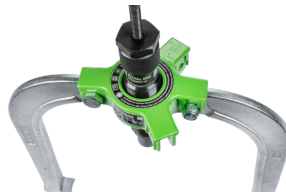
OPERATION

- Position the puller leg from the outside onto the part to be pulled
- Pivot the claws under the component
- Use the T-handle to operate the hydraulic spindle
- Reposition the hydraulic spindle until the component is released

APPLICATION IMAGE



DETAIL IMAGE



MASTER DATA

GTIN [EAN]	4021176032776
Country of origin	DE
Case material	Tool steel
Series	844-B
Net weight [kg]	5,12 kg
Package contents	1 piece
Packaging Act	PAP 21
Global sales capability given	Yes (REACH, RoHS, POP, PROP65, TSCA)

SPARE PARTS

- 800_short hydraulic spindle
- 800-150_Spindle extension
- 844-000_2-jaw cross beam for series 844
- 844-020_Threaded insert for series 844 / 845
- 844-251_Puller leg for series 844 / 845