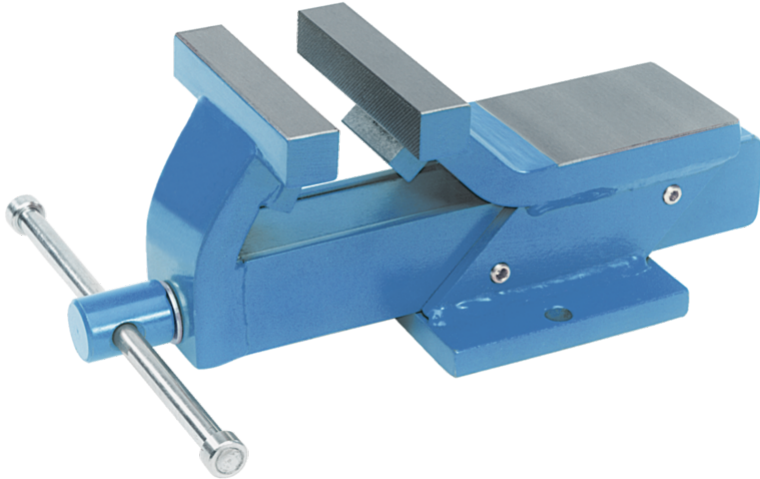


520-125-R All-steel vice with jaw width, 25 mm jaw height, up to 140 mm clamping range (Red)



DESCRIPTION

The all-steel vices of the 520 series are used for clamping workpieces in crafts, industry, and workshops. The light version of the 520 series is ideal for the universal clamping of simple workpieces, and the material ensures the necessary durability and stability of the vice.

RANGE OF APPLICATION

For clamping workpieces

BENEFIT

- High-quality material and easy operation
- Light version for flexible work in workshop and craft
- Available in the colours blue, red and anthracite

OPERATION

- Place the workpiece between the jaws of the vice
- Move the jaws by actuating the spindle and clamp the workpiece

MASTER DATA

GTIN [EAN]	4027474455668
Country of origin	DE
Case material	Tool steel
Series	520
Net weight [kg]	7 kg
Package contents	1 piece
Packaging Act	PP 05
Global sales capability given	Yes (REACH, RoHS, POP, PROP65, TSCA)

SPARE PARTS

- 545-125_Vice jaws with magnetic strips, aluminium, smooth
- 545F125_Vice jaws with magnetic strip, felt, red
- 545G125_Vice jaws with magnetic strip, aluminium with rubber, grey
- 545K125_Vice jaws with magnetic strip, plastic, blue
- 550-125_Vice jaws, aluminium with prisms