

# 15-4 Separator with separating diameter 30 mm - 200 mm, 65 mm usable cutting depth (mounting thread G5/8)



## APPLICATION IMAGE



### DESCRIPTION

The separators of series 15 are used together with the pullers of series 18 for pulling ball bearings, roller bearings, inner rings, and other flush-mounted parts in crafts, industry, and workshops when there is not enough space for pulling jaws. The separation-pulling process is capable of initially separating these parts gently before they can be externally extracted.

### RANGE OF APPLICATION

Together with the extractors of series 18 for extracting ball bearings, roller bearings, inner rings and other parts lying flat

### BENEFIT

- The sharp cutting edges enable pulling where other types of pullers are inapplicable
- By bolting the separator and puller, the highest stability is ensured during pulling
- If the separating jaws are screwed into the puller the other way around, the contact surface is enlarged and it is pulled off more gently.

### OPERATION

- Press the sharp edges of the separator behind the part
- Tighten the separating jaws using the pressure spindle by evenly tightening the adjusting nuts on the side bolts of the separator, ensuring that the separating knife is fully seated under the part to be removed
- Screw the side screws of the puller into the threaded holes of the separator until they stop
- Hold the separator and carefully and securely pull off the part by tightening the clamping nut

### MASTER DATA

GTIN [EAN]	4021176007378
Country of origin	DE
Case material	Tool steel
Series	15
Net weight [kg]	11,8 kg
Package contents	1 piece
Packaging Act	PAP 21
Global sales capability given	Yes (REACH, RoHS, POP, PROP65, TSCA)

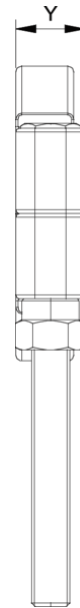
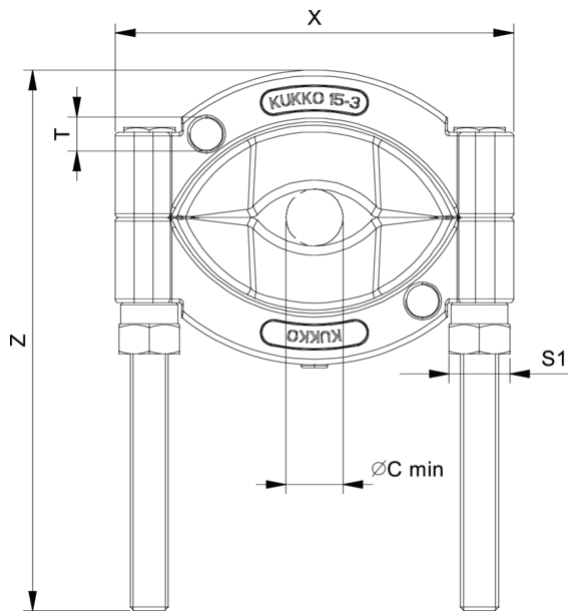
### SUITABLE FOR

- 18-4\_Puller
- 18-4-B\_Hydraulic Puller (including mechanical spindle)

### SPARE PARTS

- 015401\_Side bolt with nut

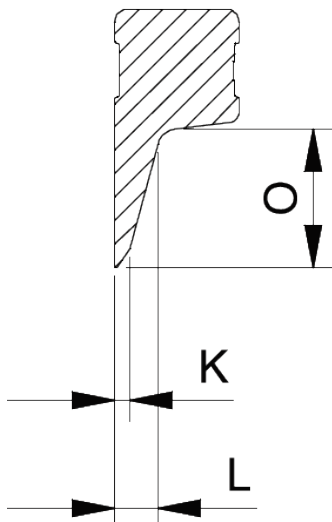
# Separator with separating diameter 30 mm - 200 mm, 65 mm usable cutting depth (mounting thread G5/8)



Abbreviation	Attribut	Wert
X	Total width [mm]	280 mm
Y	Total depth [mm]	42 mm
Z	Total height [mm]	390 mm
S1	Width across flats [mm]	41 mm
Cmin	Cut-off diameter (min.) [mm]	30 mm
Cmax	Separating diameter (max.) [mm]	200 mm
K	Cutting edge thickness at the tip [mm]	2 mm
O	Usable snow depth [mm]	65 mm
H	Total cutting edge height [mm]	103 mm
L	Rear cutting edge thickness [mm]	15,6 mm
T1	Mounting thread for tension bolt [nominal dimension] G5/8	

Abbreviation	Attribut	Wert
X	Total width [mm]	280 mm
Y	Total depth [mm]	42 mm
Z	Total height [mm]	390 mm
S1	Width across flats [mm]	41 mm
Cmin	Cut-off diameter (min.) [mm]	30 mm
Cmax	Separating diameter (max.) [mm]	200 mm
K	Cutting edge thickness at the tip [mm]	2 mm
O	Usable snow depth [mm]	65 mm
H	Total cutting edge height [mm]	103 mm
L	Rear cutting edge thickness [mm]	15,6 mm
T1	Mounting thread for tension bolt [nominal dimension] G5/8	

## A-A



Abbreviation	Attribut	Wert
X	Total width [mm]	280 mm
Y	Total depth [mm]	42 mm
Z	Total height [mm]	390 mm
S1	Width across flats [mm]	41 mm
Cmin	Cut-off diameter (min.) [mm]	30 mm
Cmax	Separating diameter (max.) [mm]	200 mm
K	Cutting edge thickness at the tip [mm]	2 mm
O	Usable snow depth [mm]	65 mm
H	Total cutting edge height [mm]	103 mm
L	Rear cutting edge thickness [mm]	15,6 mm
T1	Mounting thread for tension bolt [nominal dimension]	G5/8